



Schrida Technology



Schrida Technology

Professional manufacturer and innovator of access control

BUSINESS



Schrida-Your reliable partner

CONTENTS

01

Company Profile

Professional manufacturer and innovator of access control

02

Smart Access Control

Wireless access control kit | WiFi fingerprint access control

03

Standalone Access Control

Biometric fingerprint access control | standalone access control

04

Wiegand Card Reader

Wireless Wiegand reader | Proximity card reader

05

Network Controller | QR Code RFID reader

Network controller | QR Code access control/reader



/01

Company Profile

PROFESSIONAL MANUFACTURER & INNOVATOR OF ACCESS CONTROL

YOUR RELIABLE PARTNER

- sales@schridatech.com.cn
- www.schridatech.com.cn

Company Profile

Founded in 2012, Schrida Technology started over 10 years ago and has quickly positioned itself as the professional manufacturer and innovator of access control products.

We offer a wide range of access control products such as traditional access control, network/wireless smart access control, QR code access control, RFID proximity card reader etc.

We take pride in the fact that we carry out all work with our own teams of specialists, engineers and expert staffs. So we not only provide our customers with standard finished products. but also supply customized products as customers' requests. We make it easy to work with us when you need customized service. You link to the customer support, and we can quickly connect you with the right person to address your needs.

Our mission is to provide the high quality security products, so that our customer can get reliable results quickly, easily and consistently. We are now operating under certified quality management system, that ensures all customers get high quality products, superior customer support, and outstanding value.





Service

Delivery

Pricing

Quality

About our service

Design & Manufacture
OEM & ODM service
Customized service

About the delivery

Quick response and fast
delivery

About the pricing

High quality with
competitive price

About the quality

Total Quality Management
Quality is everything for us
IQC,IPQC,OQC & finished
product QA

Our Mission



Our mission is to provide the high quality security products to keep you safe and to become your reliable partner



Responsibility

Keep you safe



Quality

Quality is everything



Innovation

Primary driving force for our development

/02

Smart Access Control

WIRELESS ACCESS CONTROL KIT

WiFi FINGERPRINT ACCESS CONTROL



01 SK1

3 in 1 ABS keypad wireless access control kit

Power: keypad: 3pcs AAA batteries

Exit button: CR2032 lithium battery(3V)

Controller:DC12V±20% (SP1 power box optional)

Input: EM 125KHz | Mifare 13.56MHz | PIN code (4-8 digits)

User capacity: 500 normal users+100 guest users

Housing: Thickened ABS | waterproof: IP66

Doorbell & relay built-in the indoor wireless controller

Environmental: -30°C~ + 60°C | 10%-99%

Dimension: 145×125×55mm



optional

Adopt the 433MHz wireless technology and TEA + rolling code encryption algorithm

Temporary guest users | doorbell button and interface | Easy wiring & installation

02 SK8

3 in 1 Metal keypad wireless access control kit

Power: keypad: 2pcs AAAA batteries
Exit button: CR2032 lithium battery (3V)
Controller: DC12V±20% (SP1 power box optional)

Input: EM 125KHz | PIN code (4-8 digits)
User capacity: 1000 normal users+100 guest users

Housing: Zinc alloy | waterproof: IP66
Doorbell & relay built-in the indoor wireless controller

Environmental: -40°C ~ + 60°C | 10%-90%
Dimension: 129×44×20mm



Adopt the 433MHz wireless technology and TEA + rolling code encryption algorithm

Temporary guest users | doorbell button and interface | Easy wiring & installation

03 S10-T

3 in 1 Metal Touch screen keypad wireless access control kit

Power: keypad: 3pcs AAA batteries
Exit button: CR2032 lithium battery(3V)
Controller:DC12V±20%

Input: EM 125KHz | PIN code (4-8 digits)
User capacity: 1000 normal users+100 guest users

Housing: Zinc alloy | Touch Screen | waterproof: IP66
Doorbell & relay built-in the indoor wireless controller

Environmental: -30°C~ + 60°C | 10%-90%
Dimension: 115×76×25mm



Adopt the 433MHz wireless technology and TEA + rolling code encryption algorithm

Temporary guest users | doorbell button and interface | Easy wiring & installation

04 S10-K

3 in 1 Metal housing silicone keypad wireless access control kit

Power: keypad: 3pcs AAA batteries
Exit button: CR2032 lithium battery(3V)
Controller:DC12V±20% (SP1 power box optional)

Input: EM 125KHz | PIN code (4-8 digits)
User capacity: 1000 normal users+100 guest users

Housing: Zinc alloy | Touch Screen | waterproof: IP66
Doorbell & relay built-in the indoor wireless controller

Environmental: -30°C~ + 60°C | 10%-90%
Dimension: 115×76×25mm



Adopt the 433MHz wireless technology and TEA + rolling code encryption algorithm

Temporary guest users | doorbell button and interface | Easy wiring & installation

New Arrival **tuya[®]** Wifi

SF6-T

WiFi smartphone remote management fingerprint access control/reader

- WiFi smartphone app remote management
- Metal case of black paint | Waterproof IP66
- Multiple authentication way: fingerprint | card | PIN | multi-users | temporary guest users
- EM or/and Mifare card (mobile NFC | NFC 213-216)
- EM Wiegand 26 | Mifare Wiegand 26-44,56,58 input/output
- 200 fingerprint users & 400 card users

Open the door remotely by app | Door status check by app
Set the temporary PIN code by app | Query the open records by app | Users management (add/delete) by app



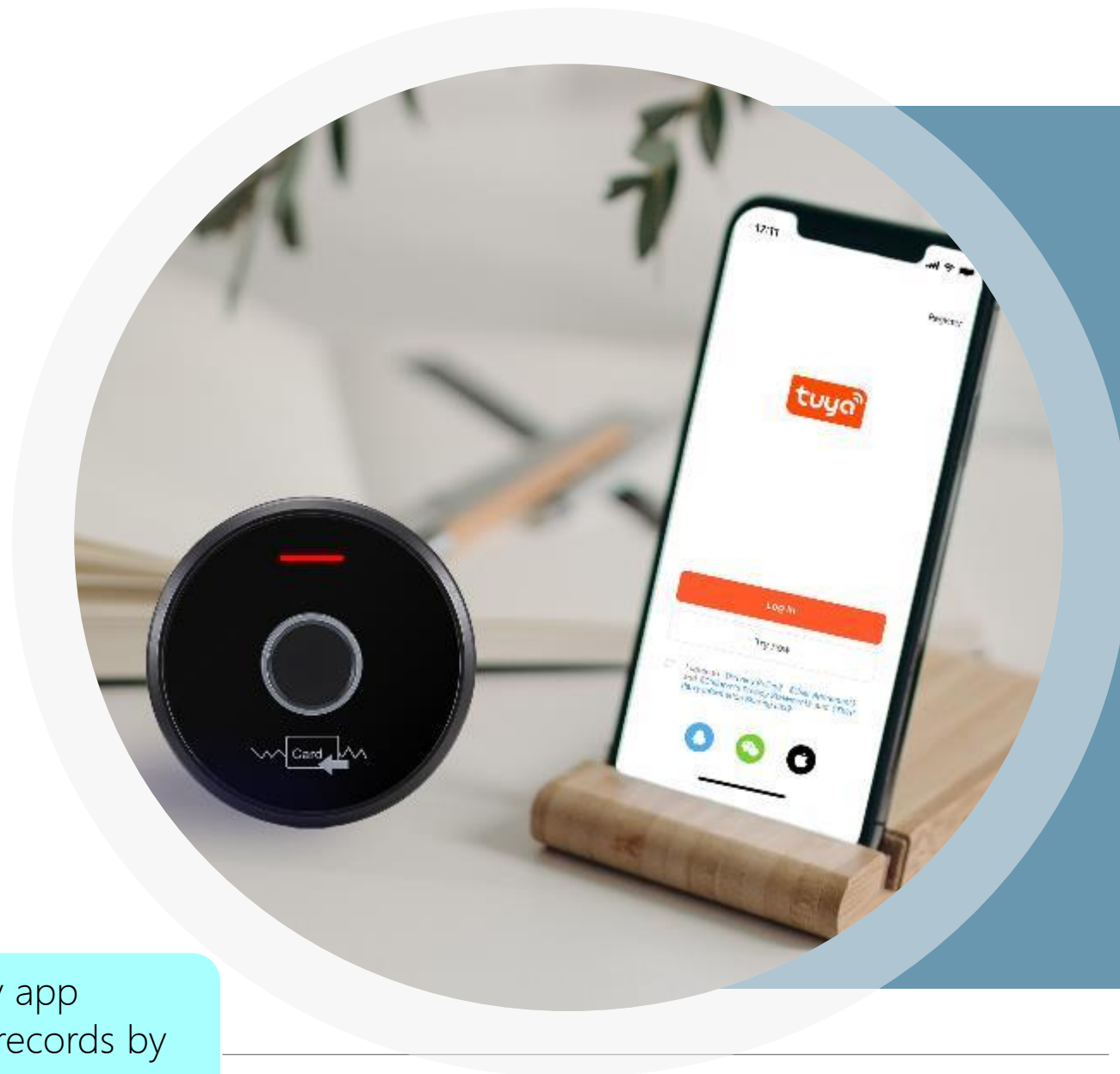
New Arrival 

SF7-T

WiFi smartphone remote management Mini Waterproof fingerprint access control/reader

- WiFi smartphone app remote management
- Metal case of black paint | Waterproof IP66
- Multiple authentication way: fingerprint | card | multi-users | temporary guest users
- EM or Mifare card (mobile NFC | NFC 213-216)
- EM Wiegand 26 | Mifare Wiegand 26-44,56,58 input/output
- 200 fingerprint users & 400 card users
- $\varnothing 63\text{mm}$

Open the door remotely by app | Door status check by app
Set the temporary PIN code by app | Query the open records by app | Users management (add/delete) by app



New Arrival 

SF10-T

WiFi smartphone remote management fingerprint touch screen access control/reader

- WiFi smartphone app remote management
- Metal case of black paint | Waterproof IP66
- Multiple authentication way: fingerprint | card | PIN | multi-users | temporary guest users
- EM or/and Mifare card (mobile NFC | NFC 213-216)
- EM Wiegand 26 | Mifare Wiegand 26-44,56,58 input/output
- 200 fingerprint users & 400 card users

Open the door remotely by app | Door status check by app
Set the temporary PIN code by app | Query the open records by app | Users management (add/delete) by app



New Arrival



SF8-T

WiFi smartphone remote management touch screen embedded fingerprint access control/reader

- WiFi smartphone app remote management
- Metal case of black paint | Waterproof IP66
- Multiple authentication way: fingerprint | card | PIN | multi-users | temporary guest users
- EM or/and Mifare card (mobile NFC | NFC 213-216)
- EM Wiegand 26 | Mifare Wiegand 26-44,56,58 input/output
- 200 fingerprint users & 400 card users

Open the door remotely by app | Door status check by app
Set the temporary PIN code by app | Query the open records by app | Users management (add/delete) by app



/03

Standalone Access Control

FINGERPRINT ACCESS CONTROL

METAL STANDALONE ACCESS CONTROL

PLASTIC ABS ACCESS CONTROL



01 SF1

Metal fingerprint standalone access control/reader

Power: DC12V±25%

Input: EM or/and HID 125KHz | Mifare 13.56MHz | Wiegand 26-44
NFC213-216 | Mobile NFC

Output: Wiegand 26-44 | Optical fingerprint sensor

User capacity: 1000 fingerprint users+2000 card users

Housing: Zinc alloy | Waterproof:IP67

Environmental: -30°C~ + 60°C | 10%-99%

Dimension: 136×47×26mm



Admin add/delete fingerprints/cards | Admin access fingerprint/card

Anti-tamper alarm | interlock | Multi-users | Access mode & Switch mode

New Arrival

SF6

Waterproof metal touch screen fingerprint standalone access control/reader

- Metal case of black paint | Waterproof IP66
- Multiple authentication way: fingerprint | card | PIN | multi-users | temporary guest users
- EM or/and Mifare card (mobile NFC | NFC 213-216)
- Card user & PIN code user data copy
- EM Wiegand 26 | Mifare Wiegand 26-44,56,58 input/output
- User capacity:3000
200 fingerprint users & 2800 card or PIN code users



Attractive appearance—Metal case, the surface of black paint

Powerful function—fingerprint/card/Pin/multi-users/guest user

New Arrival

SF7

Waterproof metal circular mini fingerprint standalone access control/reader

- Metal case of black paint | Waterproof IP66
- Multiple authentication way: fingerprint | card | multi-users | temporary guest users
- EM or/and Mifare card (mobile NFC | NFC 213-216)
- Card user & data copy
- EM Wiegand 26 | Mifare Wiegand 26-44,56,58 input/output
- User capacity:3000
200 fingerprint users & 2800 card or PIN code users



Attractive appearance—Metal case, the surface of black paint

Powerful function—fingerprint/card/multi-users/guest user

New Arrival

SF10

Waterproof metal touch screen fingerprint standalone access control/reader

- Metal case | Waterproof IP67
- Multiple authentication way: fingerprint | card | PIN | multi-users | temporary guest users
- EM or/and Mifare card (mobile NFC | NFC 213-216)
- Card user & PIN code user data copy
- EM Wiegand 26 | Mifare Wiegand 26-44,56,58 input/output
- User capacity:3000
200 fingerprint users & 2800 card or PIN code users



Attractive appearance—Metal case, the surface of black paint

Powerful function—fingerprint/card/Pin/multi-users/guest user

New Arrival

SF8

Waterproof metal touch screen embedded fingerprint standalone access control/reader

- Metal case | Waterproof IP67
- Multiple authentication way: fingerprint | card | PIN | multi-users | temporary guest users
- EM or/and Mifare card (mobile NFC | NFC 213-216)
- Card user & PIN code user data copy
- EM Wiegand 26 | Mifare Wiegand 26-44,56,58 input/output
- User capacity:3000
200 fingerprint users & 2800 card or PIN code users
- Embedded installation



Attractive appearance—Metal case, the surface of black paint

Powerful function—fingerprint/card/Pin/multi-users/guest user

02 S7E

Metal waterproof standalone access control/reader

Power: Wide range DC10-24V

Input: EM 125KHz | Wiegand 26 | PIN Code 4-8 digits

Output: Wiegand 26 | Virtual card number

User capacity: 2000

Housing: Zinc alloy | Waterproof: IP67

Environmental: -40°C ~ + 70°C | 10%-98%RH

Dimension: 110×76×22mm



Admin add/delete card | Add new users with the serial numbered cards

Anti-tamper | Door contact & External alarm interface | Access mode & Switch mode

03 S7M

Metal waterproof standalone access control/reader

Power: Wide range DC10-24V

Input: Mifare 13.56MHz(UID 4 bytes,7bytes,Plus) | Wiegand 26 or 34
PIN Code 4-6 digits | NFC 213-216 | Mobile NFC

Output: Wiegand 26 or 34 | PIN code 4 bit

User capacity: 1500

Housing: Zinc alloy | Waterproof: IP67

Environmental: -40°C~ + 70°C | 10%-98%RH

Dimension: 110×76×22mm



Admin add/delete card | Add new users with the serial numbered cards | Anti-duress

Anti-tamper | Door contact & External alarm interface | Access mode & Switch mode

04 S7H

Metal waterproof access control/reader

Power: Wide range AC/DC10-30V

Input: HID 125KHz | Wiegand 26-37 | PIN Code 4-6 digits

Output: Wiegand 26-37 | PIN code 4 bit.8bit(ASCII) |
10 digits virtual card number

User capacity: 2000

Housing: Zinc alloy | Waterproof: IP67

Environmental: -40°C~ + 70°C | 10%-98%RH

Dimension: 110×76×22mm



Admin add/delete card | Anti-passback for single door | Multi-user | Anti-duress | Add new users with the serial numbered cards

Anti-tamper | Door contact & External alarm interface & doorbell interface | Switch mode | Reader mode | smart control of the keyboard light & buzzer

05 S8E

Metal waterproof standalone access control/reader

Power: Wide range DC10-24V

Input: EM 125Khz | Wiegand 26 | PIN code 4-8 digits

Output: Wiegand 26 | Virtual card number

User capacity: 2000

Housing: Zinc alloy | Waterproof: IP67

Environmental: -40°C ~ + 70°C | 10%-98%RH

Dimension: 129×44×20mm



Admin add/delete card | Add new users with the serial numbered cards | doorbell button

Anti-tamper | Door contact & External alarm interface | Access mode & Switch mode

06 S8M

Metal waterproof standalone access control/reader

Power: Wide range DC10-24V

Input: Mifare 13.56Mhz(UID 4 bytes,7bytes,Plus) | Wiegand 26 or 34 |
PIN code(4-6 digits) | NFC 213-216 | Mobile NFC

Output: Wiegand 26 or 34 | PIN code 4 bit

User capacity: 1500

Housing: Zinc alloy | Waterproof: IP67

Environmental: -40°C~ + 70°C | 10%-98%RH

Dimension: 129×44×20mm



Admin add/delete card | Add new users with the serial numbered cards | Anti-duress

Anti-tamper | Door contact & External alarm interface & doorbell interface | Switch mode

07 S8A

Powerful Metal waterproof standalone access control/reader

Power: Wide range AC/DC10-30V

Input: EM/HID 125KHz | Mifare 13.56MHz(UID 4 bytes,7bytes,Plus)
4-6 digits PIN | Wiegand 26-37 | NFC213-216 | Mobile NFC

Output: Wiegand 26-37 | PIN code 4 bit.8bit(ASCII) | 10 digits virtual card number

User capacity: 2000

Housing: Zinc alloy | Waterproof: IP67

Environmental: -40°C~ + 70°C | 10%-98%RH

Dimension: 129×44×20mm



Admin add/delete card | Anti-passback for single door | Multi-user | Anti-duress | Add new users with the serial numbered cards

Anti-tamper | Door contact & External alarm interface & doorbell interface | Switch mode | Reader mode | smart control of the keyboard light & buzzer

08

WS7E

Large Capacity metal standalone access control/reader

Power: Wide range DC10-24V

Input: EM 125KHz | Wiegand 26

Output: Wiegand 26

User capacity: 10000

Housing: Zinc alloy | Waterproof: IP67

Atmel MCU | user data stored in another separate chip

Environmental: -40°C ~ + 70°C | 10%-98%RH

Dimension: 110×76×22mm



Admin add/delete card | Interlock | Anti-passback | Anti-tamper alarm | Door contact &

External alarm interface | Access mode & Switch mode | Programed by IR remote control

09 WS7M

Large Capacity metal standalone access control/reader

Power: Wide range DC10-24V

Input: Mifare 13.56MHz | NFC 213-216 | Mobile NFC | Wiegand 34

Output: Wiegand 34

User capacity: 10000

Housing: Zinc alloy | Waterproof: IP67

Atmel MCU | user data stored in another separate chip

Environmental: -40°C~ + 70°C | 10%-98%RH

Dimension: 110×76×22mm



Admin add/delete card | Anti-tamper alarm

Access mode & Switch mode | Programed by the IR remote control

10 S9E

ABS waterproof standalone access control/reader

Power: Wide range DC10-24V

Input: EM 125KHz | Wiegand 26 | PIN Code 4-6 digits

Output: Wiegand 26 | Virtual card number

User capacity: 1000 | color black optional

Housing: Thickened ABS | Waterproof: IP67

Environmental: -40°C ~ + 70°C | 10%-98%RH

Dimension: 134×48×25mm



Admin add/delete card | Add new users with the serial numbered cards | doorbell button

Anti-tamper | Door contact & External alarm interface | Access mode & Switch mode

11 S9M

ABS waterproof standalone access control/reader

Power: Wide range DC10-24V

Input: Mifare 13.56MHz(UID 4 bytes,7 bytes, Plus) | Wiegand 26 or 34
PIN Code 4-6 digits | NFC213-216 | Mobile NFC

Output: Wiegand 26 or 34 | PIN code 4 bit

User capacity: 1500 | color black optional

Housing: Thickened ABS | Waterproof: IP67

Environmental: -40°C ~ + 70°C | 10%-98%RH

Dimension: 134×48×25mm



Admin add/delete card | Add new users with the serial numbered cards | Anti-duress

Anti-tamper | Door contact & External alarm & doorbell interface | Switch mode

New Arrival

ST10

Powerful metal touch screen access control/reader

Power: Wide range DC10-24V

Input: EM 125KHz | Wiegand 26 | 4-6 digits PIN

Output: Wiegand 26-44 | PIN 4 bit | 8bit | Virtual card number

User capacity: 2000 | include 2 temporary visitor users |
2 anti-duress users

Housing: Zinc alloy | Waterproof:IP67

Environmental: -40°C ~ + 60°C | 10%-98%RH

Dimension: 115×75×25mm



Admin add/delete card | Two door interlock | Multi-user | Anti-duress | Add new users with the serial numbered cards | Add/delete users by Admin card | temporary visitor

Anti-tamper | Door contact & External alarm & doorbell interface | Switch mode | keypad backlit light and buzzer smart control

New Arrival

SK10

Powerful metal waterproof access control/reader

Power: Wide range DC10-24V

Input: EM 125Khz | Wiegand 26 | 4-6 digits PIN

Output: Wiegand 26-44 | PIN 4 bit | 8bit | Virtual card number

User capacity: 2000 | include 2 temporary visitor users |
2 anti-duress users

Housing: Zinc alloy & silicone keypad | Waterproof:IP67

Environmental: -40°C~ + 60°C | 10%-98%RH

Dimension: 115×75×25mm



Admin add/delete card | Two door interlock | Multi-user | Anti-duress | Add new users with the serial numbered cards | Add/delete users by Admin card | temporary visitor

Anti-tamper | Door contact & External alarm & doorbell interface | Switch mode | keypad backlit light and buzzer smart control

01 S1

ABS waterproof standalone access control

Power: Wide range DC10-24V

Input: EM 125KHz

User capacity: 2000 | Color black optional

Housing: Thickened ABS | Waterproof: IP67

Basic version of standalone access control without Wiegand

Environmental: -40°C ~ + 70°C | 10%-98%RH

Dimension: 100×43×20mm



Admin add/delete card | Anti-tamper alarm | Add new users with serial numbered cards

Access mode & Switch mode | Programed by the IR remote control

02s2

Metal rugged waterproof standalone access control

Power: Wide range DC10-24V

Input: EM 125KHz

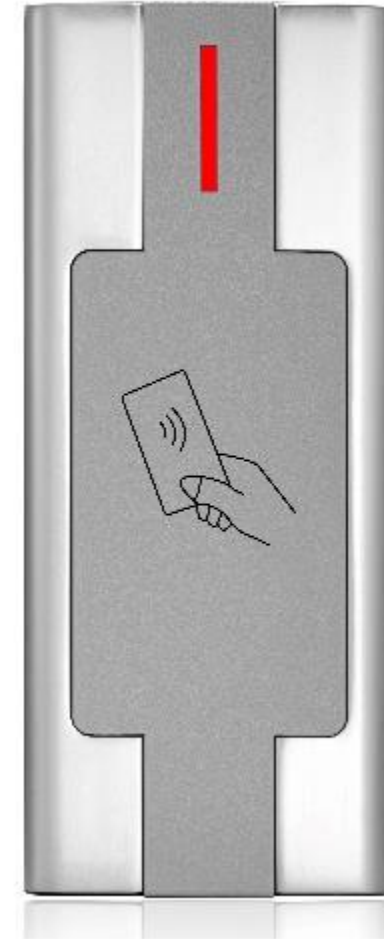
User capacity: 2000

Housing: Zinc alloy | Waterproof: IP67

Basic version standalone access control without Wiegand

Environmental: -40°C ~ + 70°C | 10%-98%RH

Dimension: 100×43×20mm



Admin add/delete card | Anti-tamper alarm | Add new users with serial numbered cards

Access mode & Switch mode | Programed by the IR remote control

03 S9

ABS waterproof standalone access control/reader

Power: Wide range DC10-24V

Input: EM 125KHz | PIN Code 4-8 digits

Output: Virtual card number

User capacity: 1000 normal users+100 temporary guest users

Housing: Thickened ABS | Waterproof:IP67

Environmental: -40°C~ + 70°C | 10%-98%RH

Dimension: 134×48×25mm

Basic version standalone access control without Wiegand

Color black optional



Access mode & Switch mode | Anti-tamper alarm | Doorbell button and interface

Support 100 temporary guest users

Two-door **TS7**

Two door waterproof standalone access control

Power: Wide range AC/DC 10-30V

Input: EM 125KHz | 4-6 digits PIN

User capacity: 1000 (Zone 1) 100 (Zone 2) | built-in two relays

Housing: Zinc alloy | Waterproof: IP67

Environmental: -40°C ~ + 70°C | 10%-98%RH

Dimension: 110×76×22mm



Admin add/delete card | Anti-tamper alarm | Add new users with serial numbered cards

Access mode & Switch mode | Anti-duress | Door contact & External alarm interface

New Arrival

S1A

ABS waterproof standalone access control/reader

Power: Wide range DC10-24V

Input: EM 125KHz | Mifare 13.56MHz | Wiegand 26~44,56,58bit

Output: EM Wiegand 26 | Mifare Wiegand 26~44,56,57bit

Supports: EM | Mifare | EM & Mifare

User capacity: 3000 | guest users: 10

Upload & download the data of card users

Housing: Thickened ABS | Waterproof: IP67

Environmental: -40°C ~ + 70°C | 10%-98%RH

Dimension: 100×43×20mm



Admin add/delete card | Anti-tamper alarm | Add new users with serial numbered cards

Access mode & Switch mode | Sound & LED light mode can be set by the users

New Arrival

S2A

Metal waterproof standalone access control/reader

Power: Wide range DC10-24V

Input: EM 125KHz | Mifare 13.56MHz | Wiegand 26~44,56,58bit

Output: EM Wiegand 26 | Mifare Wiegand 26~44,56,57bit

Supports: EM | Mifare | EM & Mifare

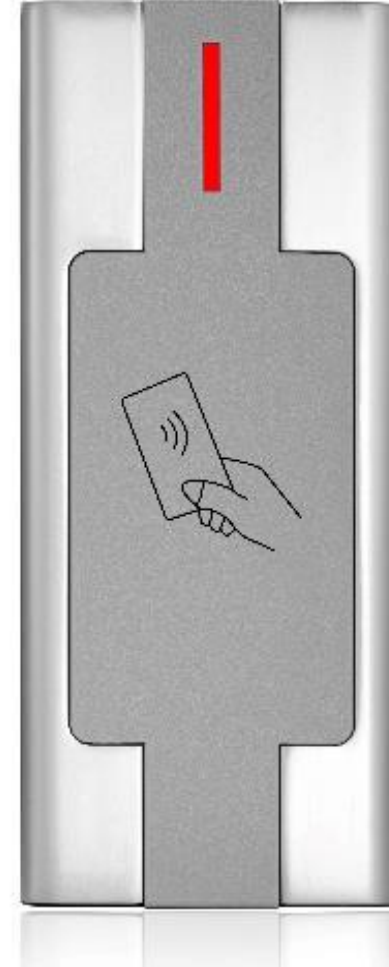
User capacity: 3000 | guest users: 10

Upload & download the data of card users

Housing: Zinc alloy | Waterproof: IP67

Environmental: -40°C ~ + 70°C | 10%-98%RH

Dimension: 100×43×20mm



Admin add/delete card | Anti-tamper alarm | Add new users with serial numbered cards

Access mode & Switch mode | Sound & LED light mode can be set by the users

New Arrival

S5

Metal waterproof circular standalone access control/reader

Power: Wide range DC10-24V

Input: EM 125KHz | Mifare 13.56MHz | Wiegand 26~44,56,58bit

Output: EM Wiegand 26 | Mifare Wiegand 26~44,56,57bit

Supports: EM | Mifare | EM & Mifare

User capacity: 3000 | guest users: 10

Upload & download the data of card users

Housing: Zinc alloy | Waterproof: IP67

Environmental: -20°C ~ + 60°C | 10%-98%RH

Dimension: φ63mm



Admin add/delete card | Anti-tamper alarm | Add new users with serial numbered cards

Access mode & Switch mode | Programed by the IR remote control

New Arrival

S6

Metal waterproof standalone access control/reader

Power: Wide range DC10-24V

Input: EM 125KHz | Mifare 13.56MHz | Wiegand 26~44,56,58bit

Output: EM Wiegand 26 | Mifare Wiegand 26~44,56,57bit

Supports: EM | Mifare | EM & Mifare

User capacity: 3000 | guest users: 10

Upload & download the data of card users

Housing: Zinc alloy | Waterproof: IP67

Environmental: -20°C ~ + 60°C | 10%-98%RH

Dimension: 130×46×16mm



Admin add/delete card | Anti-tamper alarm | Add new users with serial numbered cards

Access mode & Switch mode | Pin Wiegand output: 4bits,8bits(ASCII),virtual card number

New Arrival

SH8

Metal waterproof embedded standalone access control/reader

Power: Wide range DC10-24V

Input: EM 125KHz | Mifare 13.56MHz | Wiegand 26~44,56,58bit

Output: EM Wiegand 26 | Mifare Wiegand 26~44,56,57bit

Supports: EM | Mifare | EM & Mifare

User capacity: 3000 | guest users: 10

Upload & download the data of card users

Housing: Zinc alloy | Waterproof: IP67

Environmental: -20°C ~ + 60°C | 10%-98%RH

Dimension: 115×70×17mm



Admin add/delete card | Anti-tamper alarm | Add new users with serial numbered cards

Access mode & Switch mode | Pin Wiegand output: 4bits,8bits(ASCII),virtual card number

Access control board

SC-TM

Small standalone access control module

Power: DC12V±20%

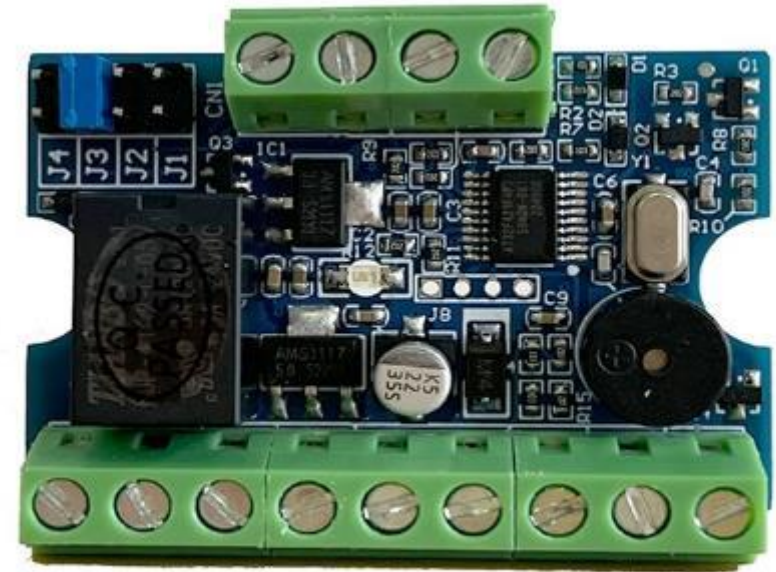
Input: external wiegand 26-42 slave reader | Touch memory reader

User capacity: 1000

Electric lock output current: ≤3A (Relay output)

Environmental: -35°C~ + 60°C | ≤90% RH

Dimension: 48×32×14mm



Two manager cards | Support external Wiegand 26-42 slave reader | specially for lockers

Support TM reader with Dallas card | Easy to work with any kind of lock



/04

Wiegand Card Reader

WIRELESS READER

MULTI-CLASS WIEGAND READER

METAL WIEGAND READER

ABS WIEGAND READER



New Arrival

WR Series

Wireless Wiegand Reader

Power: keypad: 3pcs AAA or 2pcs AAAA batteries
Receiver module :DC12V±20%

Communication frequency: 433Mhz
Communication distance: ABS housing: 100m
Metal housing: 30m

Input: 125KHz/13.56MHz Waterproof: IP66

Wiegand format :Wiegand 26/34
PIN code format: 4bit | 8 bit | Virtual card number

No wiring, Easy installation



WR8



WR9



WR10T



WR3

Adopt the 433Mhz wireless technology and TEA + rolling code encryption algorithm

Built-in wireless doorbell | Easy to work with any controller which have the Wiegand input

New Arrival

Fully Compatible Readers

Dual frequency Wiegand card reader

Power: Wide range DC10-24V

Input: EM125KHz & HID 125KHz & Mifare 13.56MHz (UID 4 bytes,7bytes,Plus) | NFC 213-216 | Mobile NFC

Output: Wiegand 26-44,56,58bit

Mifare card type: Mifare Plus, DesFire, Mifare Pro, Mifare UltraLight, Mifare class

Environmental:-40°C- + 70°C | 10%-98%RH



Fully compatible with the EM & HID & Mifare card | Support mobile NFC

Card Wiegand format can be set by the users | key output Wiegand can be customized

01 WR7

Metal waterproof rugged Wiegand card reader

Power: DC10-24V

Input: EM125KHz | HID 125KHz | Mifare 13.56MHz (UID
4 bytes,7bytes,Plus) | NFC213-216 | Mobile NFC

Output: Wiegand protocol

Card type: EM | EM & HID | Mifare

Mifare card type: Mifare Plus, DesFire, Mifare Pro, Mifare
UltraLight, Mifare class

Housing : Zinc alloy | Waterproof : IP67

Environmental:-40°C- + 70°C | 10%-98%RH

Dimension:110×76×22mm

Wiegand output for card

- The factory default is Wiegand 26(EM) or 34(Mifare)
- Other format can be set by the external IR remote control



02 SR7

Metal waterproof Wiegand keypad reader

Power: DC10-24V

Input: EM125KHz | HID 125KHz | Mifare 13.56MHz (UID
4 bytes,7bytes,Plus) | NFC213-216 | PIN code

Output: Wiegand protocol | 4 bit or 8 bit | Virtual card
number

Card type: EM | EM & HID | Mifare

Housing : Zinc alloy | Waterproof : IP67

Environmental:-40°C- + 70°C | 10%-98%RH

Dimension:110×76×22mm

- Wiegand output for card: factory default is Wiegand 26(EM) or 34(Mifare),other format can be set by the keypad
- Wiegand output for PIN: factory default is 4 bit,8 bit and virtual card number output can be set by the keypad



03 SR8

Metal waterproof Wiegand keypad reader

Power: DC10-24V

Input: EM125KHz | HID 125KHz | Mifare 13.56MHz (UID
4 bytes,7bytes,Plus) | NFC213-216 | PIN code

Output: Wiegand protocol | 4 bit or 8 bit | Virtual card
number

Card type: EM | Mifare

Housing : Zinc alloy | Waterproof : IP67

Environmental:-40°C- + 70°C | 10%-98%RH

Dimension:129×44×20mm

- Wiegand output for card: factory default is Wiegand 26(EM) or 34(Mifare),other format can be set by the keypad
- Wiegand output for PIN: factory default is 4 bit,8 bit and virtual card number output can be set by the keypad



New Arrival

SR9

ABS waterproof Wiegand keypad reader

Power: Wide range DC10-24V

Input: EM 125KHz | Mifare 13.56MHz | PIN Code 4-8 digits

Output: EM: Wiegand 26-44bit | Mifare: 26-44bit,56,58,64,66bit
PIN Wiegand 4 bit/8 bit/10 bit/virtual card number

Card type: EM | Mifare | EM & Mifare

Housing: Thickened ABS | Waterproof:IP67

Environmental: -40°C~ + 70°C | 10%-98%RH

Dimension: 134×48×25mm

Color black optional

- Wiegand output for card: factory default is Wiegand 26(EM) or 34(Mifare),other format can be set by the keypad
- Wiegand output for PIN: factory default is 4 bit,8 bit and virtual card number output can be set by the keypad



04 SH2

Metal waterproof rugged Wiegand card reader

Power: DC10-24V

Input: EM125KHz | HID 125KHz | Mifare 13.56MHz (UID
4 bytes,7bytes,Plus) | NFC213-216 | Mobile NFC

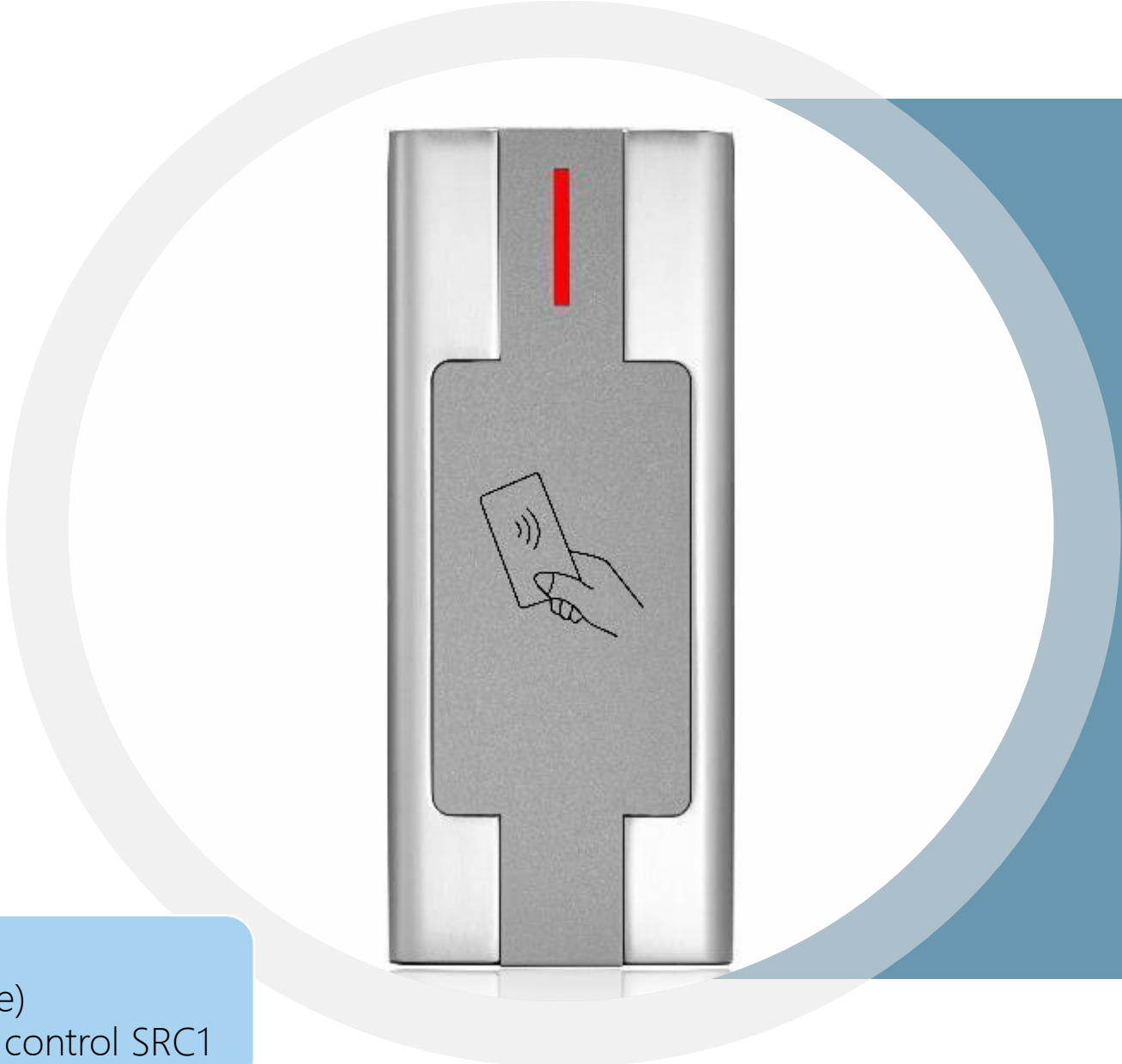
Output: Wiegand protocol

Card type: EM | EM & HID | Mifare | EM & Mifare

Housing : Zinc alloy | Waterproof : IP67

Environmental:-40°C- + 70°C | 10%-98%RH

Dimension:100×43×20mm



Wiegand output for card

- The factory default is Wiegand 26(EM) or 34(Mifare)
- Other format can be set by the external IR remote control SRC1



05 SH1

Waterproof Plastic ABS Wiegand card reader

Power: DC10-24V

Input: EM125KHz | HID 125KHz | Mifare 13.56MHz (UID
4 bytes,7bytes,Plus) | NFC213-216 | Mobile NFC

Output: Wiegand protocol

Card type: EM | EM & HID | Mifare

Housing : Zinc alloy | Waterproof : IP67

Environmental:-40°C- + 70°C | 10%-98%RH

Dimension:100×43×20mm Color gray optional

Wiegand output for card

- The factory default is Wiegand 26(EM) or 34(Mifare)
- Other format can be set by the external IR remote control SRC1



06 SH3

Waterproof Plastic ABS Wiegand card reader

Power: DC10-24V

Input: EM125KHz | Mifare 13.56MHz (UID
4 bytes,7bytes,Plus) | NFC213-216 | Mobile NFC

Output: Wiegand protocol 26 or 34

Card type: EM | Mifare | EM & Mifare

Housing : Plastic ABS | Waterproof : IP67

Environmental:-40°C- + 70°C | 10%-98%RH

Dimension:135×40×16.5mm

Support Wiegand 34 switch cable

Color white optional

Wiegand output for card

- The factory default is Wiegand 26(EM) or 34(Mifare)
- Other format can be set by the external IR remote control SRC1



/05

Network Controller QR Code RFID Reader

TCP/IP NETWORK CONTROLLER

QR CODE RFID ACCESS CONTROL

QR CODE RFID READER



01 AT8001

Single door two way in & out control board with metal housing

Power: DC12V | 4-7A

Input: Support all kinds of wiegand 26-66 reader | QR code reader with Wiegand protocol

Communication way: TCP/IP Card user capacity:40,000

Event log: 100000 (can be saved on controller permanently)

Housing: Metal housing

Environmental: -35°C ~ + 65°C | 10%-90%

Dimension: 219×122×34mm

WiFi version optional



Cloud connection | QR code reader | Time & attendance | Fire alarm | off-line operation

Realtime monitor and photo display | anti-passback | interlock | free software & SDK

02 AT8002

Two-door two way in & out control board with metal housing

Power: DC12V | 4-7A

Input: Support all kinds of wiegand 26-66 reader | QR code reader with Wiegand protocol

Communication way: TCP/IP Card user capacity:40,000

Event log: 100000 (can be saved on controller permanently)
Housing: Metal housing

Environmental: -35°C ~ + 65°C | 10%-90%

Dimension: 219×122×34mm

WiFi Version optional



Cloud connection | QR code reader | Time & attendance | Fire alarm | off-line operation

Realtime monitor and photo display | anti-passback | interlock | free software & SDK

03 AT8004

Four-door one way in & out control board with metal housing

Power: DC12V | 4-7A

Input: Support all kinds of wiegand 26-66 reader | QR code reader with Wiegand protocol

Communication way: TCP/IP Card user capacity:40,000

Event log: 100000 (can be saved on controller permanently)

Housing: Metal housing

Environmental: -35°C ~ + 65°C | 10%-90%

Dimension: 219×122×34mm



Cloud connection | QR code reader | Time & attendance | Fire alarm | off-line operation

Realtime monitor and photo display | anti-passback | interlock | free software & SDK

04 S-MX86

Embedded QR code scanner IC card reader & writer

Power: 4.7-15V

Input: QR code | one-dimensional code | ID card |
Mobile NFC | Mifare 13.56Mhz

Output: Wiegand | USB | RS485 | RS232 | TTL | WiFi

Reading Direction: 360° | Reading distance:0-10cm

Reading speed: 70ms per time

Recognizable code size: 640×480 CMOS

Environmental:-20°C- + 70°C | 5%-95%RH

Dimension:86×96×39mm

Advantage: wide range of input voltage | multiple communication ways | fast reading speed and 360 degree...



05 S-M300

Embedded QR code scanner IC card reader & writer

Power: wide range 5-24V

Input: QR code | one-dimensional code | Mobile NFC

Mifare 13.56Mhz

Output interface : Wiegand | USB | RS485 | RS232 | TTL

Reading Direction: 360° | Reading distance:0-6.24cm

Reading speed: 100ms per time

Sensor: Image type, CMOS sensor

Environmental:-20°C- + 70°C | 5%-95%RH

Dimension: 88.3×88.3×28.35mm

Not only a QR code scanner but also a Rfid card reader.
Specially designed for access control/turnstile



06 S-Q350

Waterproof embedded QR code scanner IC card reader

Power: RS232/RS485/Wiegand/TTL: DC5-15V

Ethernet (built-in relay) : DC12-24V

Input: QR code | one-dimensional code | Mobile NFC

Mifare 13.56Mhz

Output interface : Wiegand | Ethernet | RS485 | RS232

TTL Waterproof : IP67

Reading Direction: 360° | Reading distance:0-6.24cm

Reading speed: 100ms per time

Sensor: Image type, CMOS sensor

Environmental:-20°C- + 70°C | 5%-95%RH

Dimension:75×65×35.1mm

Not only a QR code scanner but also a Rfid card reader.
Specially designed for access control/turnstile



07 S-MU86

Wall-mounted QR code scanner IC card reader/writer

Power: Wide range DC12-24V

Input: QR code | one-dimensional code | Mifare 13.56Mhz | Mobile NFC

Output interface: Wiegand | RS485 | Ethernet

Reading Direction: 360° | Reading distance:15.9mm~75.68mm

Reading speed: 100ms/per time

Sensor: Image type, CMOS sensor

Environmental: -20°C- + 70°C | 5%-95%RH

Dimension: 132×88×21mm

Not only a QR code scanner but also a Rfid card reader.
With built-in relay for the Ethernet output model
Three colors optional: black | white | golden



Accessories for access control

One-stop service

We also provide our clients with one-stop service and technical support for access control.



POWER SUPPLY



• Wireless controller power supply



SP1

Access control special power supply with plug

- 1.ABS housing
- 2.Power: AC100-240V
- 3.Relay contact current: 3A | output current: 2A (2pcs 180kg magnetic lock)
- 4.Built-in relay | wireless doorbell
- 5.433Mhz wireless technology



SP2

Input voltage: AC/DC12-30V
Output voltage/current: DC12V/1A max
Dimension: L54×W42×H23mm



• Power convertor

ACCESSORY



• Relay Board



SRB01

Add this relay board to the video doorphone or access controller of MOS output to get the dry contact control, which can effectively prevent the interference.

Power supply: DC12V

Working current: 35mA

Output interface: NO/NC/COM

Dimension: L48×W26×H23mm



SRC1

Use this IR remote control to set the Wiegand format of the Wiegand card reader without keypad.

Power: CR2032 lithium battery (3V)



• IR remote controller



THANKS

***Thanks.
Schrida—For your safety***

Schrida Technology Company

www.schridatech.com.cn

